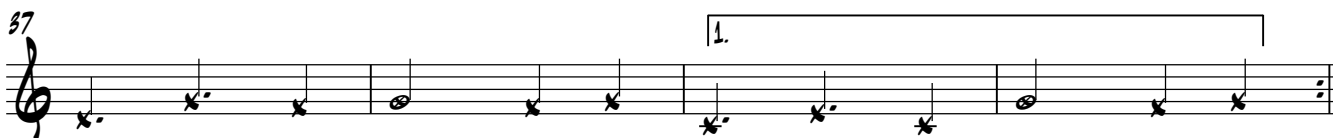
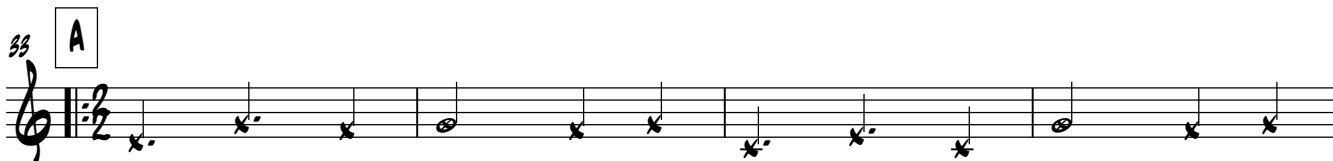
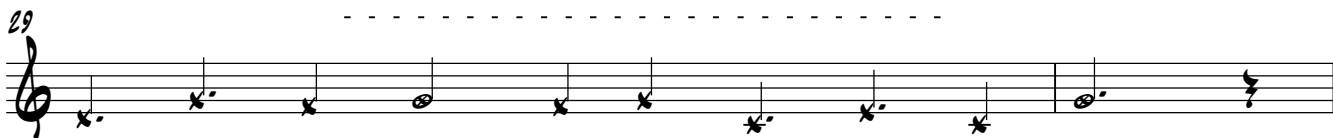
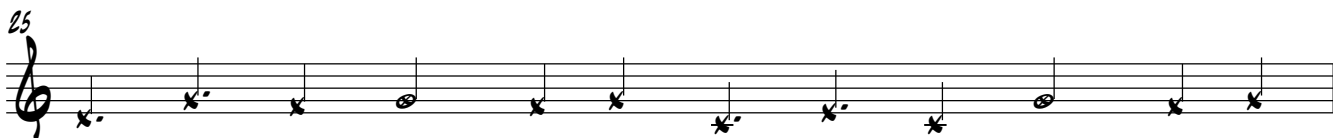
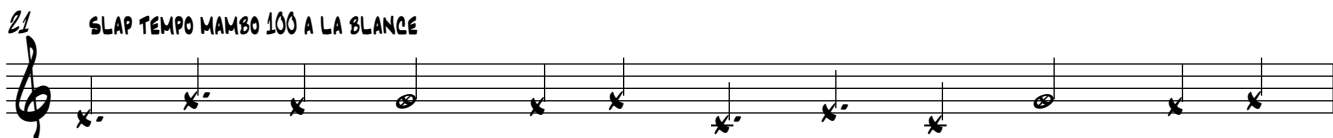
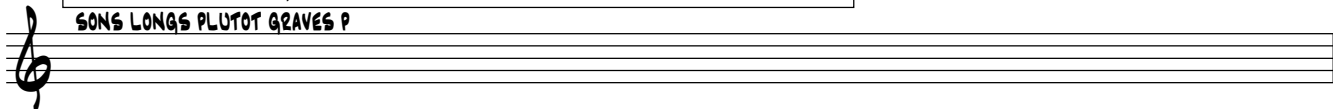


DROOPY SAY : I'M HAPPY

DOMINIQUE SOULAT

PAR COUPLE 1 ET 5 / 2 ET 4 / 3 ET 7 / 4 ET 8

IMPROVISATION LIBRE PROGRESSIVE AVEC RETENUE EN SUIVANT LES INSTRUCTIONS DE CHACUN
SONS LONGS PLUTOT GRAVES P



BARITONE SAXOPHONE 4

41 8 1. 1. 8

52 1.

56 2.

60

64 C

68

72 1. 2.

76 D CHORUS AD LIB 4/4 AVEC BARYTON

80 E 4 4

90 1. 2. 4

97

BARITONE SAXOPHONE 4

101 **F**
Musical staff with treble clef, starting with a whole rest. A box containing the letter 'F' is positioned above the staff. The music begins with a dynamic marking of *f* (forte) and consists of a series of eighth and quarter notes.

105 *mf*
Musical staff with treble clef, starting with a whole rest. The music begins with a dynamic marking of *mf* (mezzo-forte) and consists of eighth and quarter notes.

109 **G**
Musical staff with treble clef, starting with a whole rest. A box containing the letter 'G' is positioned above the staff. The music begins with a dynamic marking of *f* (forte) and consists of eighth and quarter notes.

113 *mf*
Musical staff with treble clef, starting with a whole rest. The music begins with a dynamic marking of *mf* (mezzo-forte) and consists of eighth and quarter notes.

117 **H**
Musical staff with treble clef, starting with a whole rest. A box containing the letter 'H' is positioned above the staff. The music begins with a dynamic marking of *f* (forte) and consists of eighth and quarter notes.

121
Musical staff with treble clef, starting with a whole rest. The music consists of eighth and quarter notes.

125 **S**
Musical staff with treble clef, starting with a whole rest. A box containing a stylized 'S' symbol is positioned above the staff. The music consists of eighth notes marked with an 'x'.

129 1.2.
Musical staff with treble clef, starting with a whole rest. The music consists of eighth notes marked with an 'x'. A box containing '1.2.' is positioned above the staff.

133 3.
Musical staff with treble clef, starting with a whole rest. The music consists of eighth notes marked with an 'x'. A box containing '3.' is positioned above the staff.

137
Musical staff with treble clef, starting with a whole rest. The music consists of eighth notes marked with an 'x'.

141 **FIN**
Musical staff with treble clef, starting with a whole rest. A box containing the word 'FIN' is positioned above the staff. The music consists of eighth notes marked with an 'x', ending with a final cadence. A box containing a stylized 'S' symbol is positioned at the end of the staff.